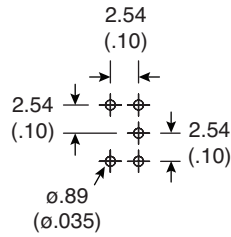
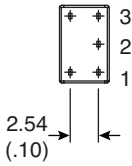
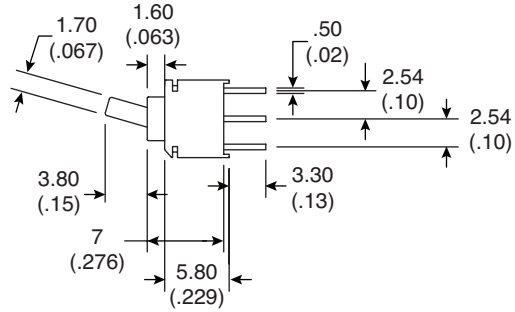
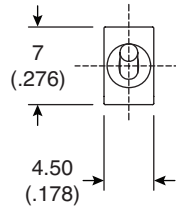
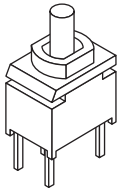


Dimensions: mm (In.)



P.C. Mounting

POS.1	POS.2	POS.3
ON	OFF	ON
2-3	OPEN	2-1

Switch Function

Electrical Specifications:

- Contact resistance: Below 100mΩ typ. initial @ 2-4 V DC, 100mA
- Insulation resistance: 1,000MΩ min.
- Dielectric strength: 500V RMS min. @ sea level
- Rating: 0.4VA max. / 20VAC or DC max.

Mechanical Specifications:

- Mechanical life: 40,000 make-and-break cycles
- Operating temperature: -30°C ± 85°C

Note:

- RoHS Compliant

Sealed Ultra-Miniature Toggle Switch
108-2US3T1255-EV

